

FASHION for *Real* PEOPLE

Retro fashion charged with color and femininity recalls the Hollywood Glamour of the '40s, the Classics of the '50s, the Hip '60s, and the Disco '70s.

SPRING/ SUMMER 2004

Butterick 4127



McCall's
4444



Vogue
7709



Vogue 7632



Vogue 7659



Vogue 7848



McCall's
4305



Vogue 2795



McCall's
4396

from *Palmer Pletsch*



McCall's, Vogue and Butterick photography is courtesy of The McCall Pattern Company.

FASHION for *Real* PEOPLE

© 2004 Palmer/Pletsch Publishing
1801 N.W. Upshur, Suite 100
Portland, Oregon 97209

Welcome to the Spring/Summer 2004 Issue of Fashion for Real People!

You may have noticed that we have changed our newsletter name. Well, we wanted to continue the "Real People" theme that has influenced the Palmer/Pletsch fit workshops, books and pattern designs for so long. We hope you like the change as much as we do!

Once again, we have studied the newest fashion trends in style, color, fabric and accessories to bring you easy ideas for adding an updated look to your existing wardrobe.

We have chosen some of the newest fashion patterns from McCall's, Vogue and Butterick that will look best for your figure type.

In our Pattern Pick section, we have chosen a complete spring wardrobe of easy, wearable separates for each body type. Simply refer to our body shape guide and the body shape symbols next to each pattern. Look for our color and fabric ideas that turn trends into Real-Life Fashion that is attainable to everyone.

We think our Editor's Choice, spring's "most wearable" pattern is just right for all body shapes and will be the backbone of your wardrobe.

In this issue, Marta Alto has joined us with her creative embroidery ideas. We think they look fabulous!

We hope to see you at the upcoming Palmer/Pletsch workshops this summer in Portland, Oregon. If you haven't already signed-up, think about joining us for great instruction, lots of sewing, shopping and just plain fun. A list of upcoming workshops is on pages 23 and 24 of this e-magazine. Or, find a certified Palmer/Pletsch sewing instructor near you on our website.

All the best,

Pati Palmer

Ethel Harms

Linda Wisner

Please send your comments and suggestions to patipalmer@aol.com or eharms@msn.com
We would love to hear from you!

www.palmerpletsch.com

WHAT'S HOT NOW:

- Color
- Femininity
- Prints
- Dresses
- Cardigan Sweaters
- Soft Skirts
- Smaller Jackets
- Ladylike Suits
- Soft Tops
- Coats
- Extravagant Accessories

Vogue 7632



Designers are once again returning to fashion favorites from the past. There is a new ladylike femininity in the safe and appropriate looks that return us to a time of innocence.

Where did all of that "fashion edginess" go? Well, it's still here but, it's displayed in the way women combine fabric, design and color to project a style that defines who they are.

Look for the *timeless classics* and Hollywood Glamour of the '40s and '50s...the trench coat, blazer, pleated skirt, shirtdress, Chanel-styled jacket and cardigan sweaters in luxurious fabrics and unexpected color.

Elegant, ladylike suits

with hemlines at mid-knee or just below the knee will be a fashion staple in every wardrobe this spring

Vogue 7659



Soft & feminine dresses,

in sheer fabrics and prints, return to the forefront with designs from the past. The slip dress, bias cut silk satin dress, halter-top, sweetheart, strapless and draped necklines are once again in favor, along with defined waistlines and full skirts.

Vogue
7709



Butterick
4127



Sewing Tip:

For strapless bustier tops, refer to the **Bridal Gowns** book for how to bone a top.

McCall's
4444



Roll edge shears on your serger for the easiest hem finish.



Fit Tip:

For fit tips for these dresses, see **Fit for REAL People**

www.palmerpletsch.com

The dress & coat ensemble, so very popular in the '60s, returns in matching pieces or exciting color and print combinations, and with pants or capris.

Sports wear takes on a Jet-set Sporty Chic with looks straight the posh resorts of the Riviera.

Smaller jackets, fitted closer to the body, in leather, denim or tweed paired with a solid chiffon or printed chiffon skirt adds to the eclectic mix.

Soft, feminine tops

are worn with jeans (try McCall's pattern 9233), high heels and chunky jewelry. Shorts appear as eveningwear, rolled-up and worn with high heels. Beaded and gem encrusted tops and accessories are worn with sportswear or under a suit jacket.



the colors



Youthful and fresh best describe **SPRING'S** new color palette. Soft corals and yellow, playful greens, aquamarine and lavender pair with neutrals in warm camel, beige, soft gray and cream. The new "nudes"...soft, skin-toned colors, will be your hottest look!

The femininity of spring fashion brings a romantic look to **SUMMER'S** color palette. Soft, washed-out colors that range from pale pinks to mint greens to sky blues and your "must have" color for spring...lavender! Your best neutrals will be taupe, beige and silver gray.

Citrus brights in orange, lemon and lime are trademark **AUTUMN** colors for spring. Add teal blue and purple for more "high impact" to your new wardrobe. Your best neutrals will be chocolate brown, rust brown, khaki and moss green.



Crisp black and white, clear pinks, raspberry red, canary yellow, emerald green, turquoise, cobalt blues, purple and fuchsia add "color power" to **WINTER'S** color palette. Your "hot look" for spring....pink and black.

Gold is THE metallic for spring, followed closely by silver and copper.



THE FABRICS:

Soft & Feminine - Silk Chiffon, Silk Organza, Silk Velvet, Silk Crepe de chine, Silk Jersey, Cotton Eyelet, Seersucker, Cotton Poplin, Cotton Pique, Cotton Jacquard, Cotton Chintz, Linen, Silk Tweed, Brocade, Spandex, Viscose, Cut-out Leather and Suede, Light weight Wool Gabardine, Light weight Wool Crepe, Cashmere, Lace, Knits and Crochet

THE PRINTS:

This is truly the season of prints! The strongest looks are in floral prints ranging from flower garden varieties to tropical and botanical prints. Pucci prints, abstracts and pop art take us back to the '60s. Paisley prints speak to us of the '70s and of course, the polka dots (especially in pink and black) are reminiscent of the '50s. Asia prints continue while stripes, especially the zigzags look great in knits.



McCall's 4384 Embroidered soft top, dangle earrings, and gold shoes

McCall's 4467 Black suit, pink flower, and bag,

The Trims:

Bring your own personal style into play this season using Embroidery, Beading, Fringe and Lace on jackets, shirts and sweaters.

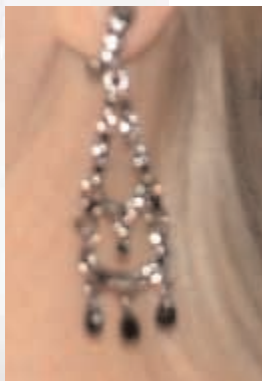
See page 18 for Embroidery Tips from Marta Alto.

THE ACCESSORIES:



- **Handbags** are exotic in color and texture this season. Look for large or small bags in floral and geometric prints, colored reptile, or with embroidery and beaded embellishments.
- **Silk flowers** will look great worn on your jacket lapels, at your waist, on a hat, or on your handbags.
- **Dangle Earrings** are the choice of the season. Worn for evening or daytime, the look is sheer glamour and femininity. Wear an assortment of bangle bracelets to compliment your style... and don't forget your pearls!

- **Gold** is the metallic of the season...look for gold handbags, gold sandals and chunky gold jewelry.
- **Big Sunglasses**....Go for the large Jackie "O" look or the classic Aviator frames.



- Look for narrow belts in colored reptile and ring-style belts, to be worn **slung low on the waist**. Pati wears a chain belt from Chico's which adds a nice touch to the knit top worn with cropped pants.
- **Oblong scarves** in solid linen or a wonderful print will add flair to jackets and sweaters. A scarf can add interest and color. The long rectangle is worn by folding it in uneven halves and threading the tails through a loop. Pati's scarf is the mesh look we last saw in the 70's.
- **Shoe selections** include a wide variety of heel heights, colors, prints and adornments. Open toed pumps, slides, ankle straps, spectator pumps, wedgies and flip-flops are just a few of the variations that complete your fashion statement. Look for the new nude colors that make your legs appear longer and coordinate with everything. Also, you will see the return of Lucite and rhinestones in heels and sandals.

Chandelier earrings, even though dressy looking, are worn with casual attire to suits.

Strappy mules are nice with cropped pants, our newest pant pattern, McCall's 4459.



*Jacket,
McCall's 3589*