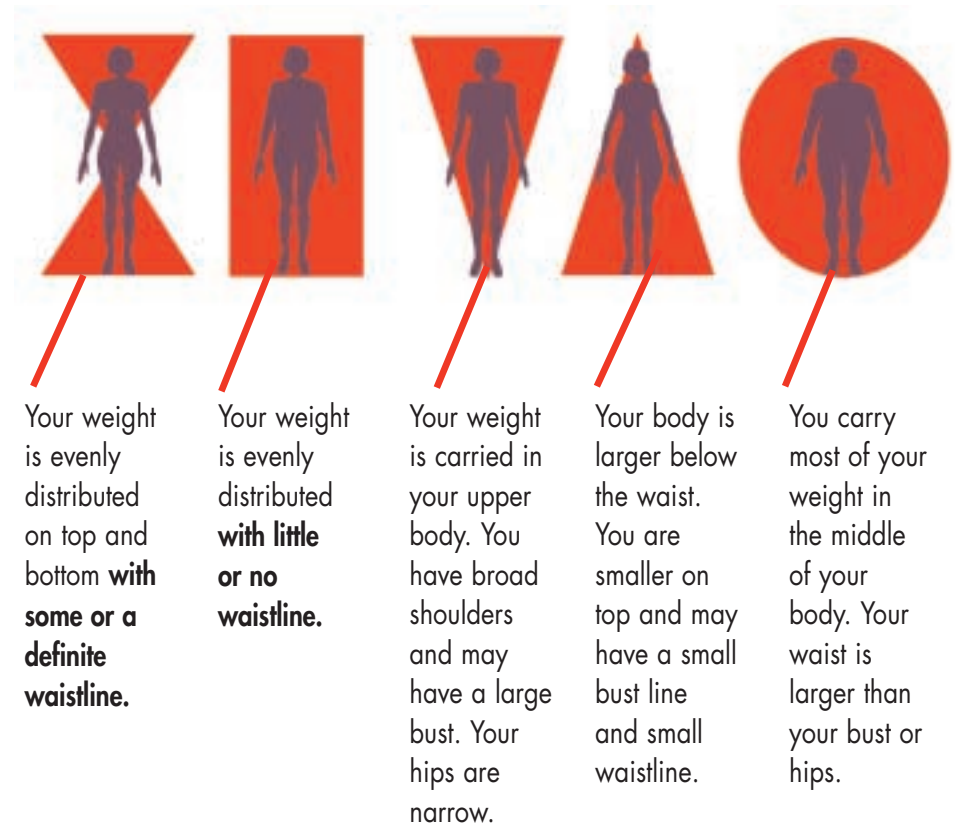


EDITORS' CHOICE: FIGURE TYPE SELECTIONS

We've chosen new designs from Vogue, Butterick and McCall's pattern books to compliment and camouflage each figure type. Also, we used the new fall 2003 update color palettes combined with menswear/feminine and bold color looks in fabrics.

Try our suggestions from each season's color palette, applying the coordinating fabric ideas that suit your own personal coloring to the pattern that suits your figure type.

LOOK FOR THESE SYMBOLS:



EDITORS' CHOICE—FIGURE TYPE SELECTIONS

This ladylike dress and jacket pattern has the perfect silhouette and design lines to enhance the waistline of the hourglass figure. The hemline is newer if it falls below the knee. The shorter jacket works extremely well for petites.

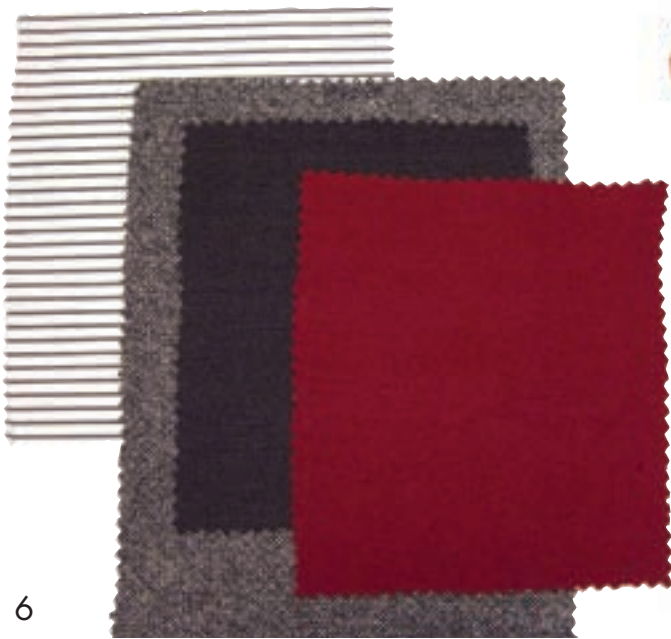
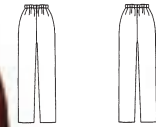
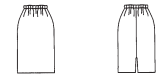
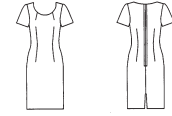
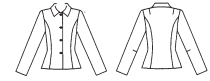
We selected three fabrics to coordinate this wardrobe:

- Charcoal tweed for the jacket and dress
- Burgundy wool gabardine for the skirt and another jacket
- Dark charcoal wool suiting for the pants and another dress

For more options add the charcoal and white menswear cotton shirting made up in McCall's Palmer/Pletsch #9579 3-Hour shirt for a crisp new look.

Wear your short tweed jacket with jeans for the latest fashion look.


hourglass
Butterick 3978
Sizes 6-22



EDITORS' CHOICE—FIGURE TYPE SELECTIONS

Vogue 2710
Sizes 6-22

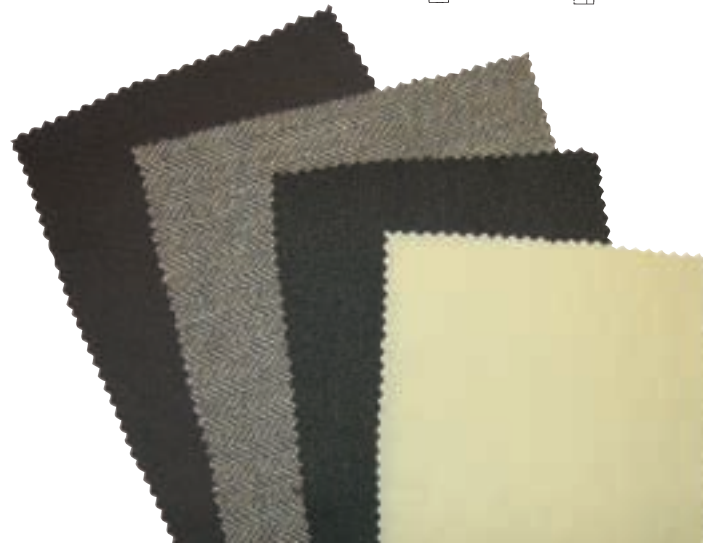
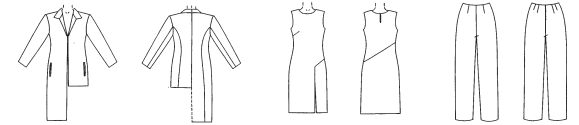
triangle 

We love the fashionable look of the coat and dress, the narrow pants and the silhouette and design lines that flatter the triangle-shaped figure type. The broad shoulders with the horizontal lines of the collar add width at the shoulders to balance the width of the hips. The dress and longer jacket are fitted at the waist to enhance the waistline and skim over the hips. The narrow pants continue the slimming lines. Look for a thin leather belt to wear at the waist of the coat for a new look.

We selected two fabrics to coordinate this wardrobe:

- Gold and moss green herringbone tweed for the jacket or coat
- Moss green wool crepe for the dress and pants. The darker colored pants will visually diminish the size of the hips.

For more options add a cotton twill pant paired with a gold colored T-shirt or knit sweater for a casual look. The lighter/brighter top will draw the eye to the upper body.



EDITORS' CHOICE—FIGURE TYPE SELECTIONS

If you have a rectangular figure type, the straight lines of this wardrobe will look great on you! Wear the long vest only if you are tall. Softly belt the dress at the waistline or wear a low-slung belt to enhance your narrow hips.

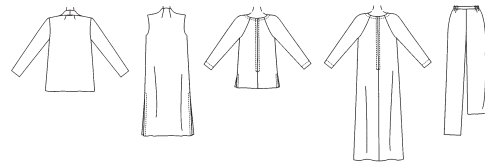
If you have an inverted triangle figure type, the raglan sleeves of the dress will soften your broad shoulders. The jacket lapels will create a vertical line that breaks the width of your upper body and the sleeveless vest worn over another colored top will visually narrow your shoulders. Adding a V neckline to the top would be a better choice to slim the upper body. Your hemline should taper to follow the slimness of your lower body and the narrow pants will be your best choice. The long vest is best on a tall person. Wear a low-slung belt to enhance your slim hips.

We wanted to use the impact of "color" for these comfortable wardrobe pieces:

- Deep plum polyester/lycra jersey knit for all pieces
- As an option, add the excitement of more color with bright accessories.

inverted triangle

McCall's 4159
Easy Knit Wardrobe – Jacket,
Vest, Dress, Top, Pants and Culottes.
Sizes 8-22



rectangle



EDITORS' CHOICE—FIGURE TYPE SELECTIONS

the "O" shape

These easy, loose-fitting pieces are perfect for the O figure type. The jacket will camouflage the waistline and create a vertical slimming line on the middle body. The elastic waist skirt and pants will fit comfortably on the waist. Adding a V neckline to the top will slim the upper body.

We selected six fabrics for this wardrobe:

- Heather green light weight wool crepe for the Jacket
- Hunter green light weight wool gabardine for the dress and pants. The darker color of the dress will visually diminish the size of the middle body when worn under the jacket.

- Mint green silk charmeuse for the top

More options to coordinate with the green pieces:

- Green and taupe wool blend tweed for an extra jacket
- Taupe wool blend suiting for the skirt or an extra pant
- Taupe silk charmeuse for an additional top. Wearing monochromatic or matching colored tops and bottoms will visually lengthen and trim your figure.



Vogue #7686 Jacket, Top, Dress, Skirt and Pants



TREND WATCH



Vogue 7158

MANY OF THE TRENDS THAT WE HAVE COVERED IN PAST FASHION FOR YOUR FIGURE ISSUES CONTINUE TO BE FASHION FAVORITES:

McCall's # 3726 Menswear tailored separates.

Perfect for this seasons pinstripes, tweeds and glen plaids.

Butterick # 6768 Wrap blouses

continue to be a strong look.

Butterick # 3606 Soft blouses in satin and chiffon

are now combined with menswear suiting

Vogue # 2614 Bomber jacket.

Add a fur collar this year.

McCall's # 3106 Short jacket.

The short jacket just gets littler every season.

McCall's # 2923 Skirted suits.

The conservative, ladylike look continues with below-the-knee skirt lengths

McCall's # 3740 Palmer/Pletsch Classic Fit Pants.

The narrow pant has become the skinny pant.

Vogue #7158 and #7277 Evening gowns.

Hollywood and vintage glamour looks continue in slinky satin and lace.

Vogue #1449 Trench Coat.

This season the trench is done in tweed, houndstooth, glen plaid and '60s mod bright colors.

Vogue # 7619 Newsboy Cap.

New in tweed, wool or denim.

McCall's # 3376 Palmer/Pletsch 2-hour jacket.

A very strong look in jewel tones, dusty pastels, mod '60s colors and tweed wool coating

Butterick #6775 Peacoat.

Still a great look in classic black.