

Palmer/Pletsch

60" wide
100% Polyester Weft

WIDER WIDTH FUSIBLE WEFT INTERFACING THAT WORKS!

PerfectFuse™ SHEER

Ideal for silky blouse-weights and cotton shirtings as well as knits.

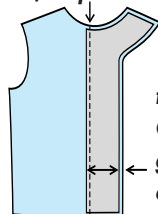
- ◆ Perfect for lightweight fabrics—polyesters, silks, cotton, stretch wovens, and rayon.
- ◆ Fusing agent won't show through to the right side.
- ◆ Polyester weft does not need preshrinking and will not shrink or bubble with washing. (Do preshrink your fabric before fusing.)
- ◆ Texture is fine and smooth enough to use with whites and sheers, yet has a crisp feel, perfect for collars, cuffs, and front facings on blouses and shirts.
- ◆ Perfect to stabilize bias neck facings and add body to zippers in fine fabric.
- ◆ Available in ecru-white and charcoal-black.



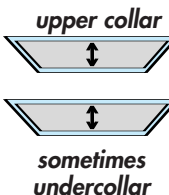
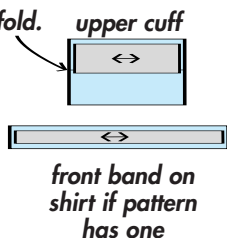
www.palmerpletsch.com

MAIN USES FOR PerfectFuse SHEER

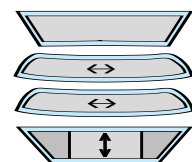
Fuse 1/4" past fold to make sure it's in fold.



You may fuse to entire cuff area.
front facing
Cut so lengthwise grain is in direction of buttonholes.



upper collar and both bands



patch pockets when needed



If not crisp enough, add an extra layer in points or two layers in entire collar.

NOTE: Crosswise grain has give. Lengthwise grain is stable.

1 yd Ecru-White \$7.95

1 yd Charcoal-Black \$7.95

3 yds Ecru-White \$23.50

3 yds Charcoal-Black \$23.50



7 43699 90020 5



7 43699 90021 2



7 43699 93020 2



7 43699 93021 9